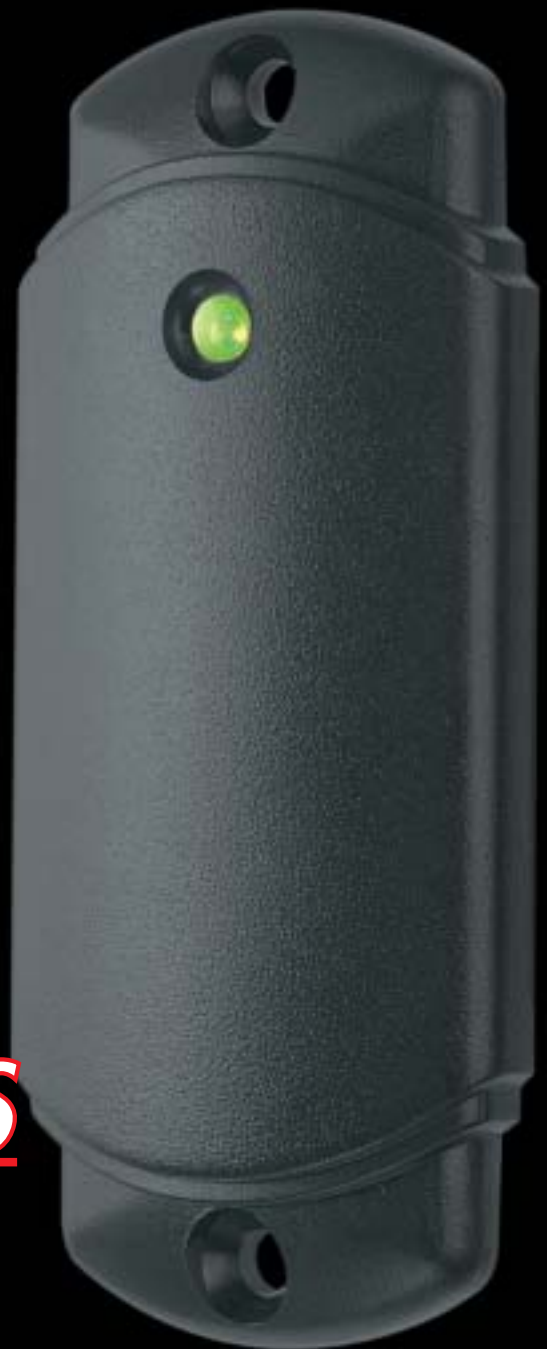




The Future of Integrated Access Control & Security Systems



 **KERISYSTEMS**
I N C O R P O R A T E D

Who Is Keri Systems?

A Worldwide Leader in Integrated Access Control and Security Systems

Celebrating our 15th anniversary, Keri Systems has been supplying quality access control systems since 1990. From the original simple, non PC-based systems through our latest sophisticated enterprise-class offerings, we remain committed to providing leading edge products, backed by superior customer service, technical support and training. This commitment extends through our reseller partners in over 90 countries to our end user customers across a wide variety of businesses and organizations.

Access Control



Time & Attendance



Digital Video



Alarm System Control



Biometrics





Photo Badging



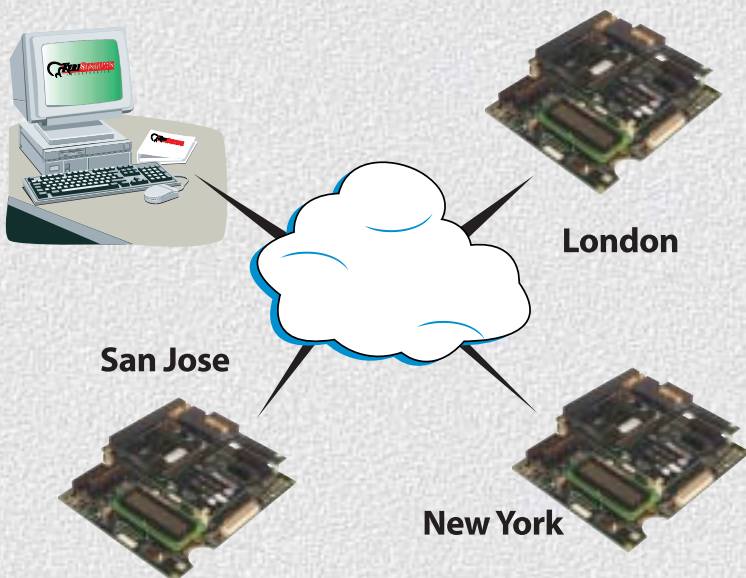
- **Integration** – All aspects of a total security solution integrated under a single umbrella
- **Service** – Unmatched customer service to answer all your questions
- **Support** – Pre-sale design and configuration through post-sale technical support
- **Training** – Web-based *Keri Technical Institute* provides interactive online training with a live Keri presenter

Telephone Entry



- **Experience** – A team of sales, design and support professionals with hundreds of years of combined security industry experience
- **Integrity** – A sterling reputation of being an honest company and strong business partner

LAN/Ethernet Connectivity



- **Quality & Reliability** – Quality products backed by excellent warranties
- **Additional Services** – Such as training, leasing, security, badge design and printing
- **Web Site** – A great tool for our customers or anyone interested in a security system

KERISYSTEMS

INCORPORATED



Badging



Doors Windows™ Software

- Real Windows™ Software. Runs under Windows™ 95, 98, 2000, ME, XP or NT 4.0
- No dedicated PC. Runs in the background with your other Windows™ applications
- PC is only required during a system upload, download or when in monitor mode
- Optional database Import and Export function
- Remote multiple site management via modem or TCP/IP
- 32 System Operators, each with password protection and configurable privileges
- 32 Time Zones, each with (4) start and stop intervals
- 3 Holiday Schedules, each with 32 user definable holidays
- Time and Attendance Reporting
- Web-based training via *Keri Technical Institute (KTI)*

User Menu



Alarm Control

Alarm System Integration

Operator Friendly

Access Group setup is made easy through the use of step by step walk through wizards.

PC Requirements

Recommended Minimum PC Requirements

- 90Mhz Celeron or Pentium Processor
- Mouse and Keyboard
- 128 MB RAM, 20GB Hard Drive
- SVGA Graphics Card
- CD-RW CD-Burner
- Available Com Port
- Windows 95, 98, 2000, ME, XP, or NT 4.0

Badging Option

- Available USB port
- Up to 1 GB hard Drive Space for photos



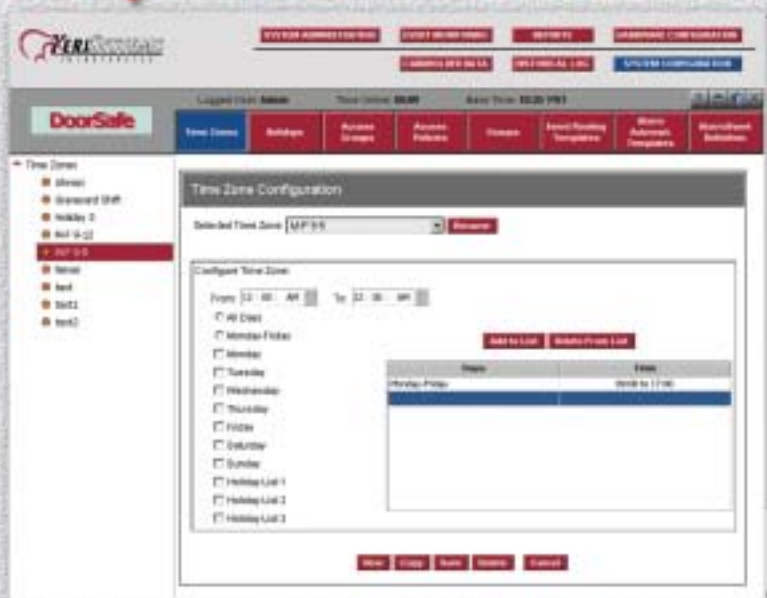
Access Groups



DoorSafe Enterprise Software

- **Global** – Multiple sites, multiple operators, one database
- **User Friendly** – Familiar browser interface with easy to follow menus
- **Flexible** – Unlimited time zones and access groups
- **Monitoring** – Routine and critical events in separate windows, with alarm notification, routing and annotated acknowledgement
- **Powerful** – Runs on Microsoft MSDE and other SQL database engines
- **PXL-500 Compatible**

Setup Time Zones



PC Requirements

- 3.0 GHz Pentium 4 processor or better
- 512 MB RAM
- 40 GB hard Drive – 7200 RPM & 8MB Cache
- SVGA Graphics Card
- 20 GB Tape Drive (recommended)
- 1-/100 Ethernet Card
- 64 MB SVGA Graphics Adapter
- Windows 2000 Professional Operating System

MS Series Proximity Readers

The smallest, most attractive and highest performance proximity readers available.



MS-3000 MicroStar™

- Ultra Thin Profile Dual Color LED for Confirmed Read
- Piezo Alert Confirmation
- Up to 4" (10cm) Read Range
- Lifetime Warranty

3.4"H x 1.4"W x 0.38"T
(86mm x 36mm x 10mm)



MS-5000 MiniStar™

- Single Gang Box Mount
- Ultra Thin Profile
- Available in both Black and White
- LED & Piezo Confirmation
 - Up to 7" (18cm) Read Range
- Lifetime Warranty

4.3"H x 3.0"W x 0.38"T
(109mm x 76mm x 10mm)

Specialty Reader



MS-4000 ShootingStar™

- Bullet Proof
- Vandal & Flame Resistant
- Ideal for High Crime Areas
- Virtually impossible to pry-off the wall or door frame
- Up to 2" (5cm) Read Range
- Lifetime Warranty

5.25"H x 2.0"W x .075"T
(13.4cm x 5.1cm x 1.9cm)

Access Cards



KC-10X

- Standard light proximity card
- Beveled edges, easy wallet fit
- Sequentially numbered
- Very Thin, Only .059" (1.5mm) thick
- Can accept PVC "label" with printed graphics and photo
- Lifetime Warranty

Lifetime Reliability!



MS Series Proximity Readers



MS-7000 SuperStar™

- Extended Read Range
- Compact and Ultra-Thin Profile
- LED & Piezo Confirmation
- Up to 15" (38cm) Read Range
- Lifetime Warranty

8.5"H x 6"W x 0.83"T
(21.6cm x 15.2cm x 2.1cm)

**Very Secure –
No Duplicate Cards Or Tags**

PKT-10X



- Extremely durable
- Key chain convenient
- Reinforced eyelet
- Washing machine tough
- Sequentially numbered
- **Lifetime Warranty**

MT-10X



- Proximity combined with a magnetic strip card
- Photo imageable
- With or without mag stripe
- ISO Thin
- Sequentially numbered

- Lifetime Warranty
- Proximity is easier to use, no more codes or swiping cards to worry about
- Leave your card in your wallet or purse
- Proximity readers have no keys or buttons to be vandalized, no card slots to get dirty or jammed
- Virtually impossible to duplicate with billions of possible codes
- MS-3000 MicroStar, read range of up to 4" (10cm)
- MS-4000 ShootingStar, read range of up to 2" (5cm)
- MS-5000 MiniStar, read range of up to 8" (20cm)
- MS-7000 SuperStar, read range of up to 15" (38cm)

Reader Performance & Warranty

- Read ranges shown are mounting dependent
- See Reader data sheets for more details
- Requires 6-conductor shielded cable

The PXL-500 Tiger II Controller™

The PXL-500 Tiger II Controller significantly reduces the cost of proximity access control, not just the equipment cost, but the total installed cost, due to some great installer features for "plug and play" functionality. The PXL-500 is compatible with existing PXL-250 systems.

Unconditional 2 Year Warranty*

Super reliable RS-485 networking.

Link up to 128 controllers (256 doors) via one simple twisted pair, shielded cable, loop distance up to 4000' (1200m).

Optional SB-593 Expansion Board adds second door capability with (6) additional programmable inputs and (2) relay outputs.

On-board RS-232 serial port connector for direct PC or modem connection for remote multiple site management.

Quick disconnect terminals are used for all connections. A real time saver for both the installer and technician.

TCP/IP port for local or remote site management.

Lightning fast RISC-based multiprocessor platform. Connection via PC and updating of the database has never been faster.

Status LED's for system power, network communications, and relay function.

Optional plug-in LCD Display for assisting with field diagnostics & troubleshooting.

On-board Lithium battery will retain system memory for 5 years.

Simple one-button address setting with LED display. No DIP switches or pre-configuring with a PC.



Alarm Integration with Access Control using PXL-510



- *Real* access control with integrated alarm control and reporting
- Arm and disarm system using access reader or separate reader
- No need to use keypad for alarm control resulting in fewer false alarms
- Combine alarm and access system events in one convenient report
- Provides audit trail of who turned on/off alarm system in **Doors** software

Eight Door Concentrator

- 8 Door Concentrator (KDC-8) allows for mounting 4 PXL-500s and 4 SB-593s in a single space-saving, 19" IT rack-mountable enclosure.

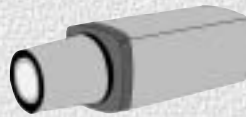


PXL-500 Tiger II Controller

- 100% Intelligence at Each Door
- Expandable 1 or 2 Door(s) at-a-time
Total capacity, 256 doors per site
- RS-232 Serial Port for Direct Connection, modem, or TCP/IP for Remote Site Management
- Alarm system control and reporting using PXL-510 with extra serial port integrates with NetworX NX-8E Alarm Panel
- Reliable RS-485 Controller Network for up to 256 Doors
- 65,000 User Capacity
- 3,600 event buffer with Auto Collection when buffer is full
- Support for Keri Proximity or any Wiegand Compatible Reader Technology

Ordering Information

- **PXL-500P** Proximity Keri controller
- **PXL-500W** Wiegand-compatible controller for other reader technologies, including biometrics.
- **SB-593** Expansion board adds 1-door and extra I/O
- **PXL-510P** Keri Proximity controller with extra serial port
- **PXL-510W** Wiegand-compatible controller with extra serial port
- **LCD-1** LCD plug-in display (diagnostics)



Integrated or Stand-Alone Digital Video System

Keri's new **Visions** software and DVRs allow customers to integrate their access control reporting and associated digital video within the **Doors** software application. After initially configuring camera to coincide with doors, gates, or other input points on the access control hardware, subsequent **Doors** QuickSearch reports will communicate with the **Visions**' server application to find and list any access system events that also have associated video clips, and play them back in a view window on demand. The **Visions**' Server application records and retrieves all video events, as well as provides on-screen camera control and live monitoring.

In addition to integrating with the **Doors** access control software, **Visions** also operates as a superb stand alone video solution and is often used without **Doors**, providing sophisticated features at a competitive price. Both **Doors** and **Visions** can be deployed as stand alone applications initially and integrated later.

Storage

Event ID	Date	Time	Location	Description
10	09/14/2004	16:59:42	Front Door	Access Granted
11	09/14/2004	16:59:44	Back Door	Door locked open
12	09/14/2004	16:59:45	Back Door	Door closed
13	09/14/2004	17:00:00	Front Door	Access Granted
14	09/14/2004	17:00:11	Front Door	Door not opened
15	09/14/2004	17:00:23	Front Door	Access Granted
16	09/14/2004	17:00:31	Back Door	Door opened
17	09/14/2004	17:01:26	Back Door	Door opened
18	09/14/2004	17:01:30	Back Door	Door opened too long
19	09/14/2004	17:01:33	Back Door	Door closed
20	09/14/2004	17:01:39	Front Door	Access Granted
21	09/14/2004	17:01:54	Front Door	Access Granted
22	09/14/2004	17:02:36	Front Door	Access Granted
23	09/14/2004	17:02:52	Front Door	Door opened
24	09/14/2004	17:03:17	Front Door	Door opened too long
25	09/14/2004	17:03:26	Front Door	Door closed
26	09/14/2004	17:03:30	Front Door	Door unlocked by operator
27	09/14/2004	17:03:33	Front Door	Operator unlocked door
28	09/14/2004	17:03:34	Front Door	Door unlocked again
29	09/14/2004	17:03:40	Front Door	Operator locked door
30	09/14/2004	17:03:43	Front Door	Door opened
31	09/14/2004	17:03:46	Back Door	Door opened
32	09/14/2004	17:03:49	Back Door	Door opened
33	09/14/2004	17:03:53	Back Door	Door closed
34	09/14/2004	17:03:59	Front Door	Access Granted
35	09/14/2004	17:04:03	Front Door	Access Granted
36	09/14/2004	17:04:06	Front Door	Access Granted
37	09/14/2004	17:04:10	Front Door	Access Granted
38	09/14/2004	17:04:14	Front Door	Access Granted
39	09/14/2004	17:04:18	Front Door	Door not opened
40	09/14/2004	17:04:20	Front Door	Access Granted
41	09/14/2004	17:04:23	Front Door	Access Granted
42	09/14/2004	17:04:26	Front Door	Access Granted
43	09/14/2004	17:04:29	Front Door	Access Granted
44	09/14/2004	17:04:32	Front Door	Access Granted
45	09/14/2004	17:04:35	Front Door	Access Granted
46	09/14/2004	17:04:38	Front Door	Access Granted
47	09/14/2004	17:04:41	Front Door	Access Granted
48	09/14/2004	17:04:44	Front Door	Access Granted

Retrieval

Event Information:
Event: Door locked open
User / Card: [blank]
Input Name: [blank]
Site: Default Site
Room: Back Door
Date and Time: 09/14/2004 16:59:44

Camera	Start Date	Start Time	End Date	End Time
Back Door	09/14/2004	16:59:42	09/14/2004	16:59:48

User	Location	Privilege
John	Front Door	Access Granted
Jane	Back Door	Access Granted
Bob	Front Door	Access Denied
Alice	Back Door	Access Denied

Operator Privileges




Doors/Video Interface



Visions by



Integrated Security Systems

-  Access Control
-  Remote Video Transmission
-  Digital Recording

Quick Search with Video



Monitoring



Visions Integrated Digital Video

- **User Friendly** – Integrated as part of acclaimed **Doors** access control software
- **Sophisticated** – Complete set of digital video features required by customers
- **State of the Art Technology**
 - Supports up to 256 simultaneous connections from **Visions** remote client
 - View live video using Java web client and Java-enabled browser
 - View live or recorded video and manage **Visions** server using Keri **Visions** remote client
 - Program to record when motion is detected or continuously
 - Simultaneous recording and playback/review of video
 - Selectable recording frame rate
- **Flexible** – 4, 8, 16 and 32 camera options for recording and monitoring, single or two box (client/server) solutions

Entraguard™

Telephone Entry Systems

Integrated or Stand-Alone Digital Video System

Entraguard, one of the oldest and most respected names in telephone entry, provides price competitive, sophisticated telephone entry systems for facilities with from 1 to 5000 tenants, without ever having to pay per-unit capacity. These new units can be operated as stand-alone systems or integrated with *PXL-500 Tiger II Controllers* as part of a larger access control system, all managed by the acclaimed *Doors* software to offer *real* access control + telephone entry.

Entraguard Platinum



Available
Q2 2005

- 5,000 Tenant Capacity
- Selectable 3/8" or 1/2" Font for 7 or 10 name display
- Point and Call
- Bright Backlit LCD
- Rugged Stainless Steel Housing
- 3 Programmable Rotating Messages
- Optional Hood, Recess Mount Kit and Handset

Entraguard Titanium



- 750 Tenant Capacity
- 4 Line Backlit LCD Display
- Rugged Stainless Steel Housing
- 3 Programmable Rotating Messages
- Built-in Hood

Entraguard Gold



- 750 Tenant Capacity
- 4 Line Backlit LCD Display
- Optional Alphanumeric Radiant Keypad for fast name search
- 3 Programmable Rotating Messages
- Optional Hood, Recess Mount Kit and Handset
- Durable steel enclosure with attractive powder coat finish



Entraguard Bronze



Residential Telephone Entry/Intercom

- Camera option
- Uses existing telephone line to call from gate to home
- Programmable from either the unit keypad or from the residence telephone
- Distinctive ring to distinguish gate calls from normal telephone calls
- 2 relays with individually programmable activation times for separate entrances
- Passcode protected PIN entry for up to 50 users
- Waterproof, angled, high reliability, vandal resistant keypad, illuminated by LED, no incandescent bulbs to replace
- LED Built-in microphone and speaker for hands free operation
- Call waiting to allow visitor interruption

Entraguard Telephone Entry Systems

Integrated – With the access control hardware, and managed under the **Doors** access control software

Value – Customers don't pay for extra memory capacity on any unit

Communication – Built in Modem and RS-485 Networking to manage multiple doors

Features – (Platinum, Titanium, Gold)

- Up to 15 digit phone numbers
- Up to 6 digit dial codes
- No incandescent bulbs to replace
- High Quality Waterproof Keypad (IP-65 rating)
- “Do Not Disturb”, programmable by time zone and tenant
- “Do Not Display” tenant name, selectable by tenant
- Remote command functions to lock and unlock controlled doors
- 2 extra programmable relays to control other points
- “Strikes and Out” to limit fraudulent PIN attempts
- Up to 6 units on a single phone line
- No-Phone-line, Postal lock and camera options

BioPointe Fingerprint ID

Keri's BioPointe Fingerprint reader provides customers with added security for sensitive locations along with the ability for the same unit to operate in several modes to allow for flexibility in user assignment. Because it has an industry standard 26-bit Wiegand output, BioPointe is compatible with Keri's PXL-500W Tiger II Controller as well as virtually any other manufacturer's controller. Each standard unit can store 720 prints in memory while the optional Extended Memory units can store 4,400 prints.

When multiple readers are employed in a system, they can be connected via an RS-485 network so that fingerprint templates can be shared from the enrollment reader to the other readers on the system via Keri's BioPointe Central software, which also provides management and reporting capabilities. When used with the optional KES-12 Enrollment Station, enrollment parameters can be optimized and enrolled users can be uploaded directly to the network.



- Combines many functions into a single model and footprint
- 720 Users standard, 4400 optional
- PIN + Fingerprint, Fingerprint-only and keypad-only in a single unit
- Optional embedded Proximity (Pyramid and HID Compatible)
- Wiegand output for universal compatibility, including Keri's **PXL-500W Tiger Controller**
- Software and hardware tools for aiding in enrollment and template management
- 20,000 event storage capacity



Integrated Time & Attendance Terminals

Many customers wish to combine time and attendance (T/A) recording with their access control system, using the “card in” and “card out” event data to help generate payroll reports. Keri’s T/A Terminals offer flexibility and functionality by providing a series of reader and controller combinations with an LCD display for employee visual verification of time, that can also be used as controllers in the access system. Using the export.exe software utility, customers can then export and filter the event data, which with a small amount of one-time “middleware” programming, can be used in virtually any 3rd party software T/A and Payroll software package. Keri can even provide access to a 3rd party T/A software partner who has been integrating with Keri products for more than 5 years.



- Terminals are a component of an integrated access control system
- Many controller/reader combinations available
- Can be used for T/A and access control
- LCD Display with time and date visible
- Simple software utility to export data to virtually any payroll software package

BioPointe Fingerprint ID Ordering Information

- **KFR-72** **BioPointe Fingerprint Reader**
720 Fingerprints, Basic Unit
- **KFR-82** **BioPointe Fingerprint Reader**
720 Fingerprints, Proximity Inside
- **KES-12** **BioPointe Hamster**
Enrollment Station
- **KCS-24** **BioPointe Adam Converter –**
RS-232 to RS-485

BioPointe Readers with Extended Memory Available

T/A Terminals Ordering Information

- **KTA-530P** **T & A Terminal**
No reader, MS series reader compatible
- **KTA-540W** **T & A Terminal**
No reader, Wiegand compatible
- **KTA-550P** **T & A Terminal**
With MS-3000 reader
- **KTA-560WH** **T & A Terminal**
Wiegand compatible
with P300H reader

**For additional Access Control functionality,
add –SB to Model Number**

RF Transmitters & Receivers

Keri's line of RF Transmitters and Receivers provides long range vehicle access, most commonly used for gated communities, or for trucking applications with access gates or roll-up doors. The transmitter, available with either 1 button or 4 buttons, conveniently attaches to a key ring, and can optionally be fitted with a proximity insert so that it can be used on the building's proximity readers as well. The receiver is compatible with Keri's PXL-500W Tiger II Controller or any other manufacturers Wiegand compatible controller, and a receiver is also available for individual garage doors in a gated community.



- Ideal for gated communities, private residences, fleet access, etc.
- Read range adjustable up to 500' (150M)
- 4 buttons to handle multiple gates in close proximity to each other
- Can also be used for individual residences within gated community with RLB-568 Receiver
- Compatible with Keri's *PXL-500W Tiger Controllers*
- Option for Keri proximity insert in transmitter for combination Prox + RF Transmitter

Ordering Information

- **RLB-500** **Receiver with Wiegand Output**
Requires Wiegand Interface
(PXL-500W or PXL-250W)
- **RLB-568** **Receiver – Garage Door**
No Wiegand Output
- **RLT-1** **1 Button Mini Transmitter**
- **RLT-4** **4 Button Mini Transmitter**

See price list for additional models and options



Services

Although Keri Systems is known as a quality provider of reliable and powerful systems that are easy to install and operate, we are more than just a product provider. We take pride in our service and support, backed by a team of experienced industry professionals who understand your business.

From pre-sale education and product specification to post sale training, Keri sets the standard for customer service and support.



Keri Technical Institute

Attend interactive training classes on Keri products with a live presenter via the web and 800 number without leaving your office. (U.S. and Canada)



Need Photo IDs as part of your security system?

Photo Badges are an important part of any security plan but a badging system and printer can be expensive

for smaller facilities. Consider letting Keri design and print the badges for you through our Badging Bureau.



Web Site

Need access to information about Keri Systems' products or services? Our web site contains everything you need; documents, software, industry references, even case

studies on reference installations are just a click away.

SecureLease™

Financing

Can't afford the up-front cost of the security system you need? **SecureLease** by Keri Systems can provide a 5 year lease-to-own solution at very competitive rates.

Pre-Sale

Consultation - We can help you design and configure the proper security system to meet your project requirements

Education - Keri Technical Institute can train both the user and installer on project installation, configuration and use

Sales and Installation

Financial Services - SecureLease from Keri can help finance the security system you need

Photo Badging Service - Keri can meet virtually any photo badge requirement

Post-Sale

Technical Support & Field Service - Our team of technical support specialists will help make sure your system is operating at its best. Though rarely needed, Keri can even send an experienced technician to your site

User Training - Train almost any new user on system operation in as little as two hours with **Keri Technical Institute**

Keri Systems Main Office

1530 Old Oakland Road, Suite 100
San Jose, California 95112 USA
Phone (408) 451-2520
Toll Free (800) 260-5265
Fax (408) 441-0309
Email sales@kerisys.com
Web www.kerisys.com

Keri Systems Latin America

8175 NW 12th Street - 130
Miami, Florida 33126 USA
Phone (786) 331-8775
Fax (786) 331-7410
Email kerila@bellsouth.com

Keri Systems Europe

Unit 17
Park Farm Industrial Estate
Ermine Road, Buntingford
Hertfordshire UK SG9 9AZ
Phone 44 (0) 8704 447234
Fax 44 (0) 1763 274106
Email sales@kerisystems.co.uk

Keri Systems Australia

Unit 1 / 5A Pioneer Avenue
Tuggerah NSW 2259
Australia
Phone 612 4353 0466
Fax 612 4353 0477
Email dmarks@keri.com.au
Web www.keri.com.au



www.kerisys.com

Contact us, or one of our business partners to find out how to put Keri to work for you.

